

The background of the advertisement is a close-up, low-angle shot of a large industrial boiler. The boiler's structure is composed of numerous horizontal, overlapping metal rings or flanges, creating a strong sense of depth and perspective. The lighting is dramatic, highlighting the metallic texture and the curved surfaces of the boiler. The overall color palette is monochromatic, consisting of various shades of grey and silver, which emphasizes the industrial and mechanical nature of the product.

HELIX[®]

PREMIUM FLUE LINER

STRENGTH AND FLEXIBILITY IN ITS DNA

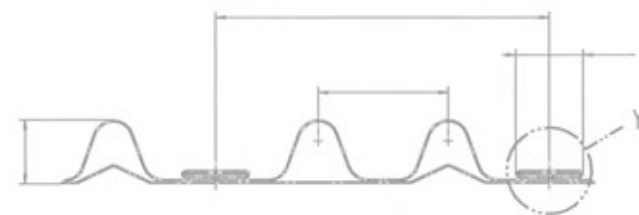


STRENGTH AND FLEXIBILITY IN ITS DNA

Unlock the genetic code of Helix Premium Flue Liner to discover the unique Omega seam for unrivalled durability.

Engineered utilising the most advanced profile on the market today, Helix represents the next evolutionary gene in multi-directional, stainless steel, twin-walled flexible flue liners approved for use with all solid fuels, gas and oil.

Stringently tested to the highest standards set out in BS EN 1856 by British test house BSRIA and certified for ongoing quality by BSI, Helix Premium Flue Liners are proudly manufactured in the UK with ultimate strength and flexibility in each seam.



PROFILING THE DNA OF HELIX FLUE LINER

Designed to surpass the optimum performance standards for a Flexible Flue Liner, Helix has been rigorously tested to decode its unique genetic fingerprint by Britain's leading test house to the following parameters:

P1 Pressure tested (200 pascals) Highest rated air tightness for flue liner in the UK

Tested to be installed up to 20 metres Maximum rating for strength in the UK

Flexibility tested up to 3 times its diameter Demonstrates extreme flexibility and durability

Tested for both wet and dry applications

Thermal tested to T600 Highest temperature rating for flue liner

$$\iiint_G f(x, y, z) dx dy dz = \lim_{n \rightarrow \infty} \sum_{i=1}^n f(x_i, y_i, z_i) \Delta V_i$$

THE OMEGA SEAM

Flexibility in a flue liner is integral to performance but can only be as strong as the durability engineered into every seam.

Only by looking closer will you reveal the building blocks of Helix Premium Flue Liner found in every fold; The Omega seam...

The precision quality of the inner seam is such that Helix is one of the only truly multi-directional flexible liners available today, offering an unrivalled smooth internal skin. Installation in either direction is guaranteed.

HELIX DESIGNATION

Helix 316L T600-P1-D-Vm-L50010-G(xx)

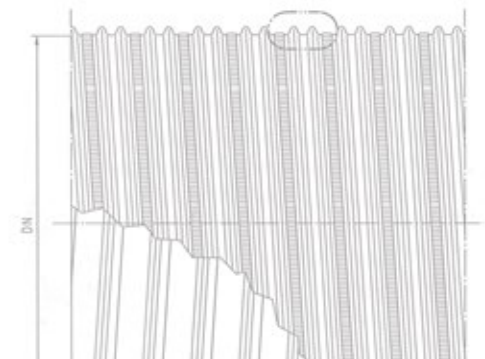
Helix 904L T600-P1-D-Vm-L70010-G(xx)

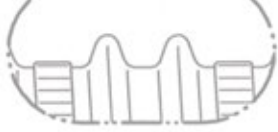
For gas and condensing applications (wet systems):

Helix 316L T600-P1-W-Vm-L50010-G(xx)

Helix 904L T600-P1-W-Vm-L70010-G(xx)

Steel thickness tolerance +/- 0.005mm





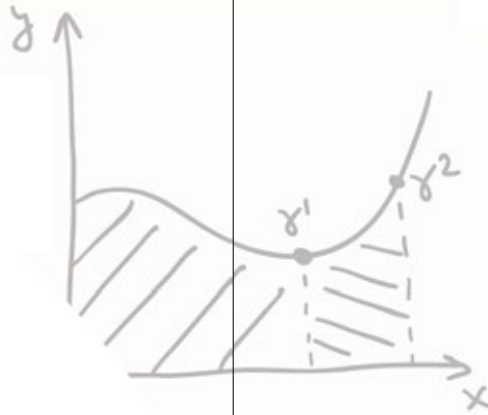
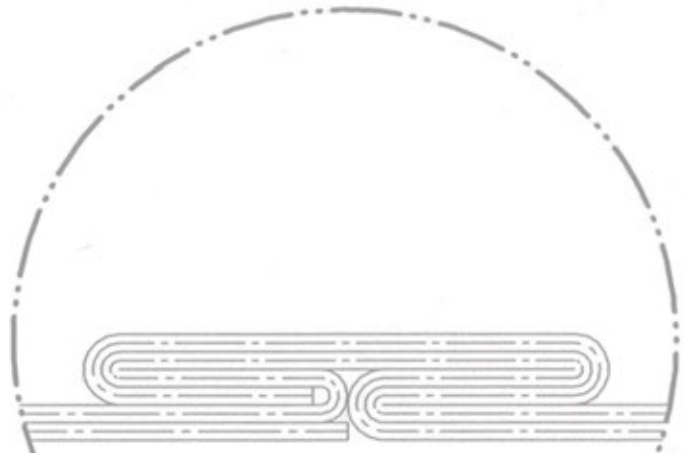
WARRANTY

Due to its precise construction, Helix Premium Flue Liner is guaranteed against manufacturing faults for the entire life of the appliance only if installed by an approved installer and used in conjunction with approved fuels. Terms & Conditions apply.

HELIX INSTALLATION COMPONENTS

Available from official Helix suppliers

- ScrewFit Short-Tail Adapter
- ScrewFit Long-Tail Adapter
- Hanging Cowl with Bird Guard
- Securing Plate
- Fixing Clamp
- Insert Rain Cowl
- Chimney Closure Plate



$$\frac{1}{2} \int_0^1 dx \int_0^{1-x} \frac{1}{(x+y+1)^2}$$



HELIX[®]

PREMIUM FLUE LINER

Tested in Britain to BS EN1856-2 by 

